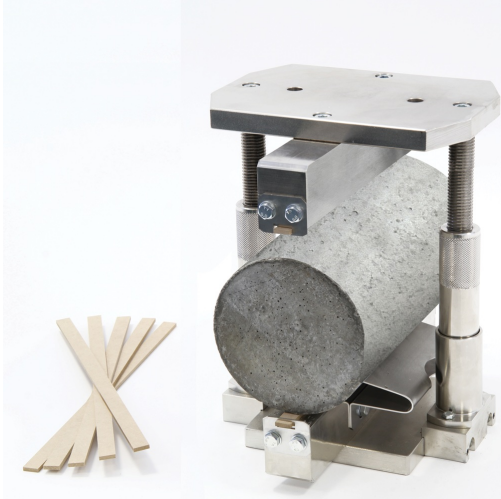


DATA SHEET

Splitting Tensile Test Devices



Splitting tensile test device for cylindrical specimens model 50-C9000/C with strips 50-C9002

General description

Two column steel frame with self-centering base specimen holder and upper load beam suspended with springs for easy adjustment of the specimen. The devices can be easily placed on lower platen of the compression tester using suitable distance pieces to adjust the vertical daylight. The device have to be completed with the packing strips to be inserted between the specimen and the load beams.

Model 50-C9000/C is used for splitting tensile tests on cylindrical specimens.

Model 50-C9070/C is used for splitting tensile tests on concrete block pavers and concrete cubes.

For both models max total height is 370 mm (14.6"). The 370 mm (14.6") vertical daylight can easily obtained removing the lower platen of the compression tester.

- Max vertical daylight: 225 mm (8.8"). Total height: 370 mm (14.6")
- Min vertical daylight: 90 mm (3.5"). Total height: 250 mm (9.8")
- Max horizontal daylight: 160 mm (6.3")
- Total width: 250 mm (9.8")
- Max travel: 45 mm (1.8")
- Bearers length : 350 mm (13.8")

Standards

- EN 12390-6
- EN 1338
- ASTM C496

Specifications

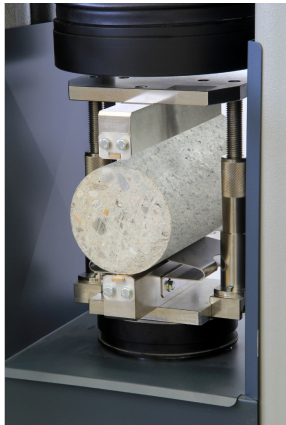
Model	50-C9000/C	50-C9000/A	50-C9070/C	50-C9070/A
Specimens	Cylinders up to dia. 160x320 mm	Cylinders up to dia. 250x500 mm	Paving blocks up to 160 mm width	Paving blocks up to 320 mm width

DATA SHEET

Max. height*	370 mm	395 mm	370 mm	370 mm
Overall dimensions, width/length, mm	250/335	346/525	250/335	420/355
Max vertical daylight, mm	225	257	225	225
Max columns regulation, mm	110	N.A	110	110
Min vertical daylight, mm	115	N.A	65**	65**
Max horizontal daylight, mm	170	255	170	330
Bearers length, mm	330	525	330	330
Weight approx. kg	32	65	33	50
Packing strips	50-C9002 to EN 50-C9002/A to ASTM	50-C9001/A	50-C9002	50-C9002

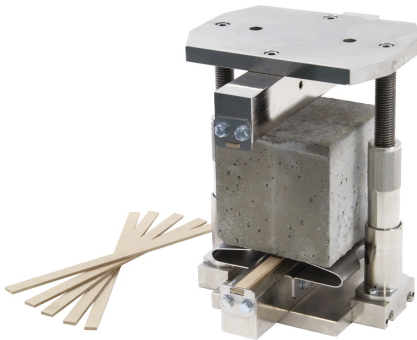
* Remove the bottom compression platen to host the jig or adjust remaining vertical daylight with suitable distance pieces.

** With 50mm distance piece included.

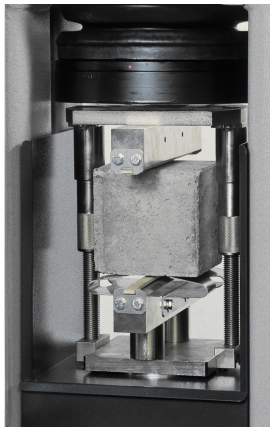


50-C9000/C fitted in the compression machine

DATA SHEET



Splitting Tensile Test device for concrete block pavers and concrete cubes model 50-C9070/C with strips 50-C9002



50-C9070/C fitted in the compression machine

Products

50-C9000/A

Splitting test device for cylindrical specimens 250x500 mm (dia. x h) to EN 12390-6. Cross section dimension 350x435 height, 65 Kg weight

50-C9000/C

Splitting tensile test device to En 12390-6 and ASTM C496 for Cylindrical specimens 100x200 mm (4" x 8"), 150x300 mm (6" x 12") and 160x320 mm (dia. x h).

50-C9070/C

Splitting tensile test device for concrete block pavers to EN 1338 and concrete cubes to EN 12390-6 . Vertical clearance: from 65 mm to 225 mm. Horizontal clearance: 170 mm. Dimensions: max height 370 mm, width 250 mm, depth 335 mm Weight: 33 Kg

50-C9070/A

EN 1338 splitting tensile test device for concrete block pavers with maximum dimensions 320x320x150mm (height).

Accessories and consumables

DATA SHEET

50-C9002

Packing strips 4 x 15 x 345 mm to EN 1338 and EN 12390-6. Pack of 50

50-C9002/A

Plywood packing strips 3 x 25 x 345 mm to ASTM C496. Pack of 50

50-C9001/A

Hardboard packing strips 4x15x550 mm, for 50-C9000/A device. Pack of 50